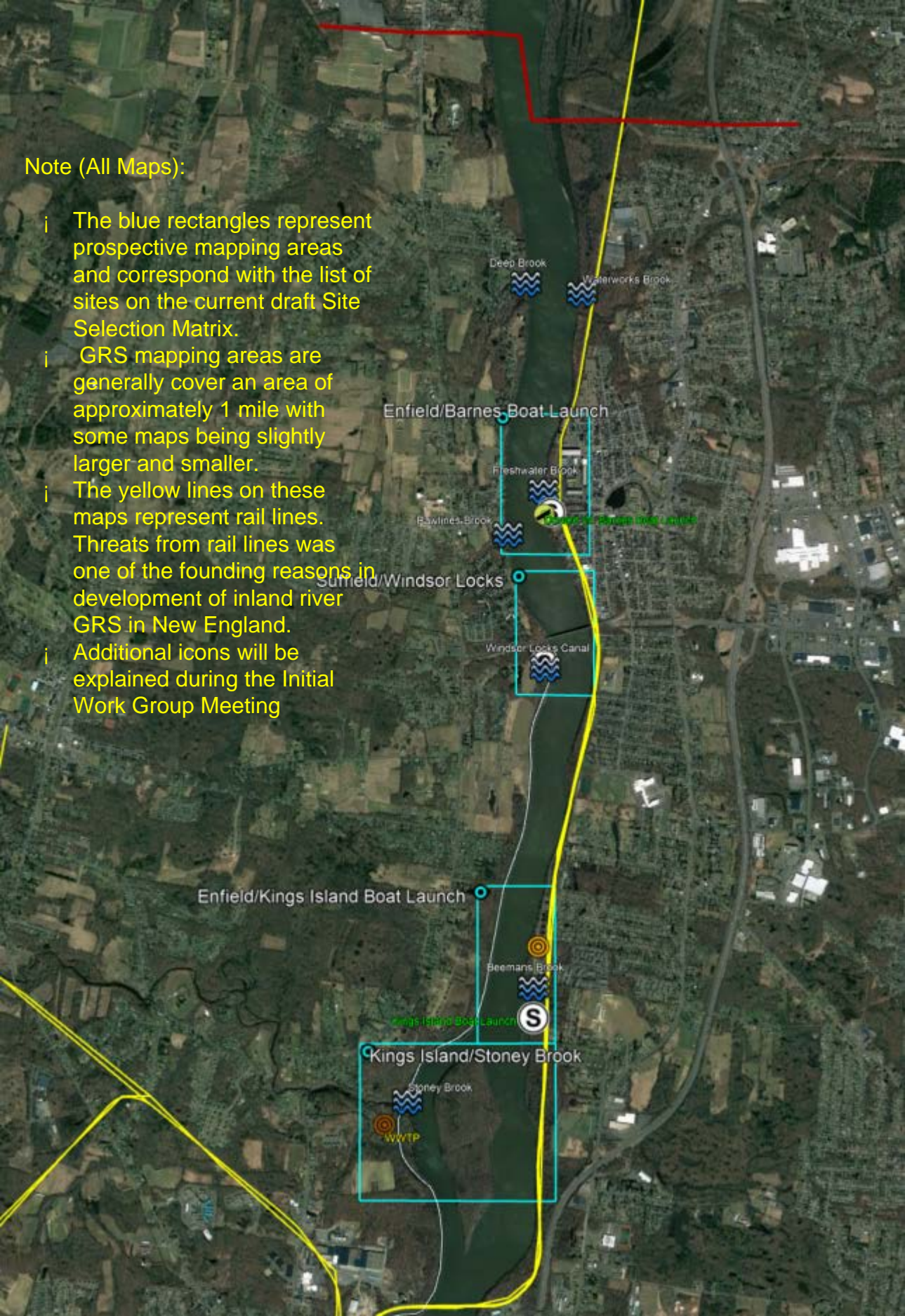
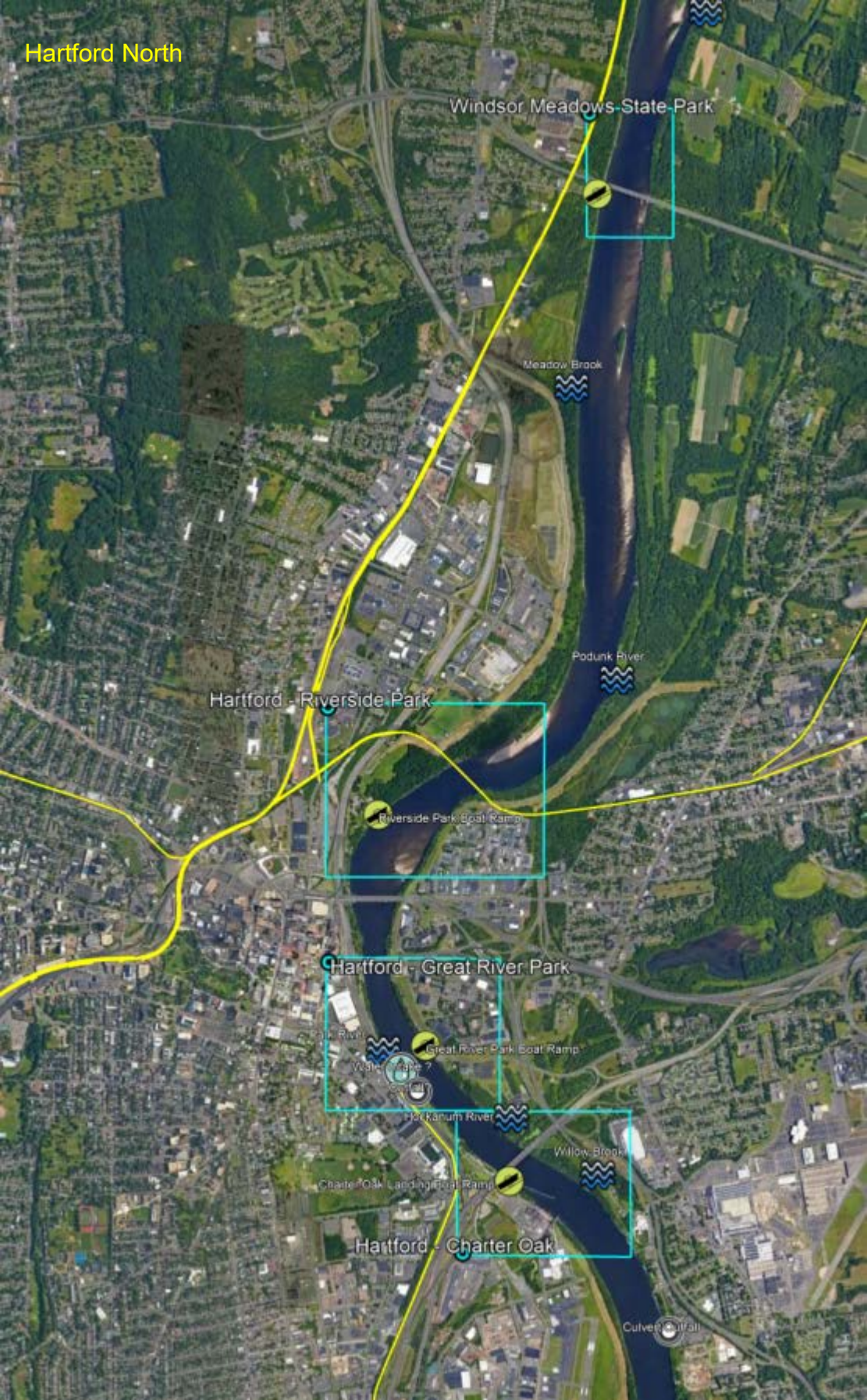


Note (All Maps):

- i The blue rectangles represent prospective mapping areas and correspond with the list of sites on the current draft Site Selection Matrix.
- i GRS mapping areas are generally cover an area of approximately 1 mile with some maps being slightly larger and smaller.
- i The yellow lines on these maps represent rail lines. Threats from rail lines was one of the founding reasons in development of inland river GRS in New England.
- i Additional icons will be explained during the Initial Work Group Meeting



Hartford North



Windsor Meadows State Park

Meadow Brook

Podunk River

Hartford - Riverside Park

Riverside Park Boat Ramp

Hartford - Great River Park

Great River Park Boat Ramp

Park River

Waterfalls 7

Fox Kanum River

Willow Brook

Charter Oak Landing Boat Ramp

Hartford - Charter Oak

Culver's Dam

Hartford South

Cove Park

Cove Park Boat Ramp

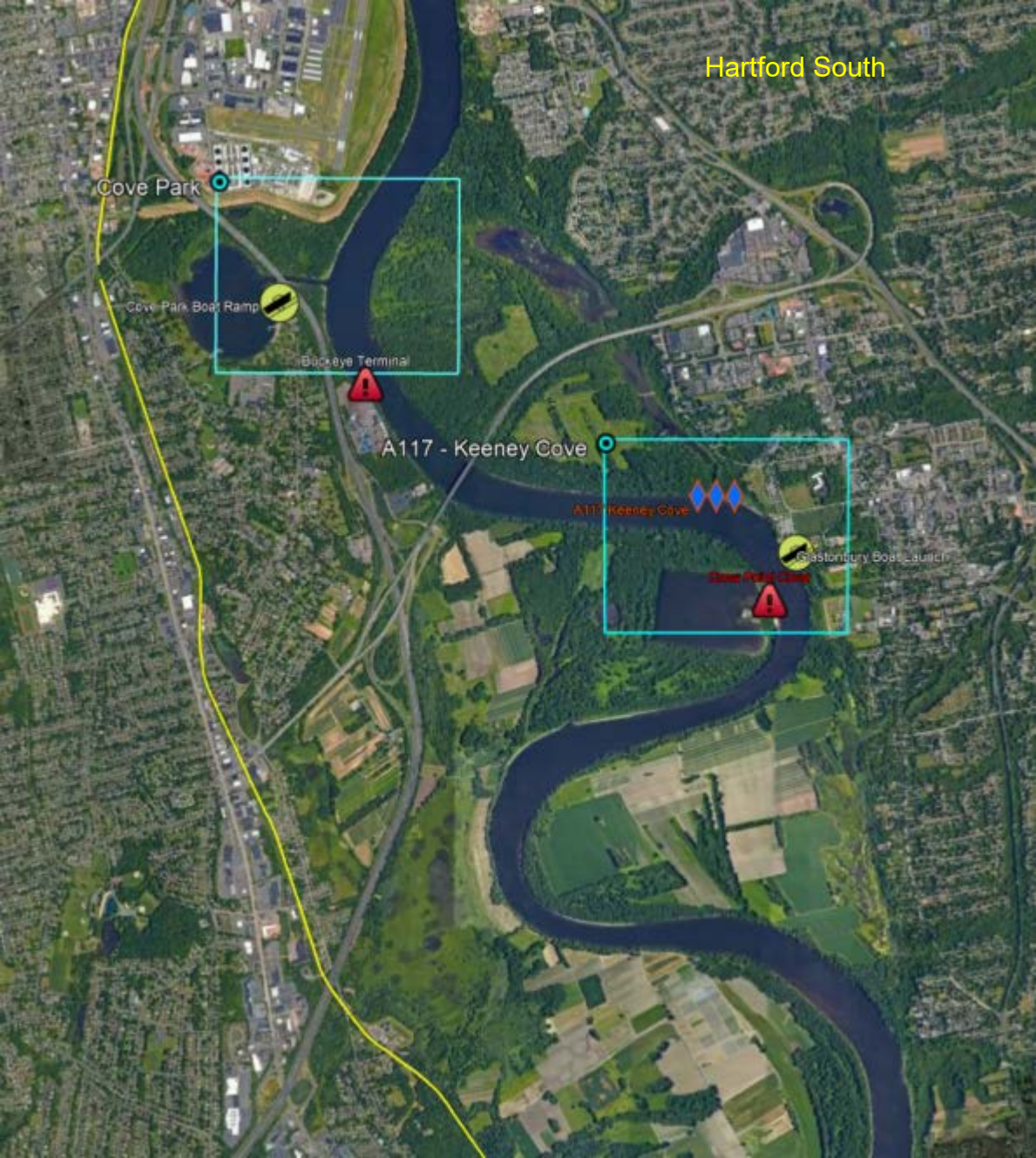
Buckeye Terminal

A117 - Keeney Cove

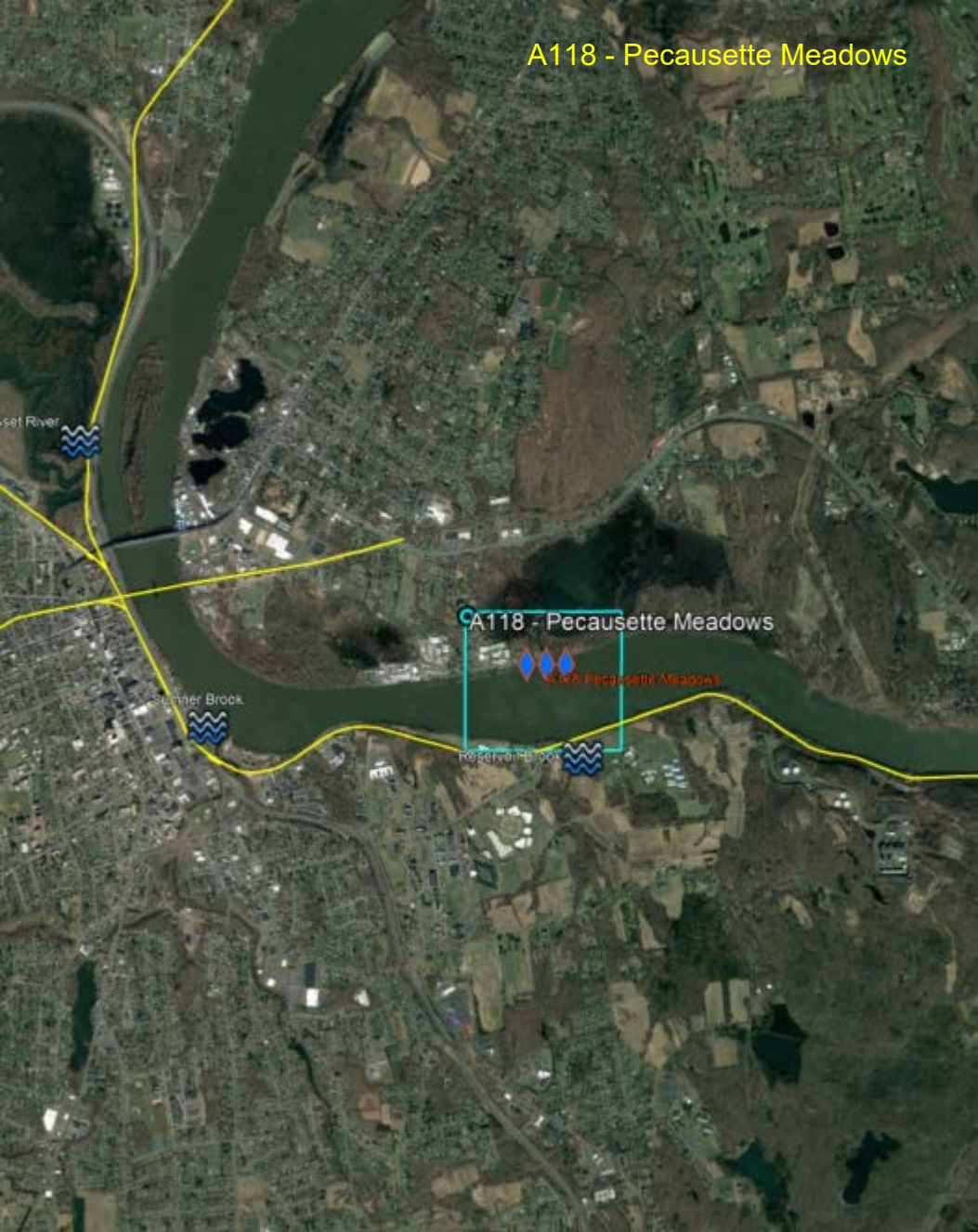
A117 Keeney Cove

Glastonbury Boat Launch

Slows Prohibit Crossing



A118 - Pecaulette Meadows



Pecaulette River



Summer Brook



A118 - Pecaulette Meadows

A118 Pecaulette Meadows

Reservoir Brook



Kriegers Brook

Hadem Meadows Boat Launch

Mil Creek

A119 - Salmon Cove

A119 Salmon Cove

Rutty Creek

Andrews Marina/Eagle Landing State Park

Andrews Marina

Succor Brook

Eagle Landing State Park

Deep Hollow Brook

A120 - Chapman Pond

Clark Creek

A120 Chapman Pond

Parkers Point Boat Ramp

Parkers Point

Chester Boat Basin

Chester Boat Basin

A121 - Whalebone Creek/Chester-Hadlyme Ferry

Chester Hadlyme Ferry

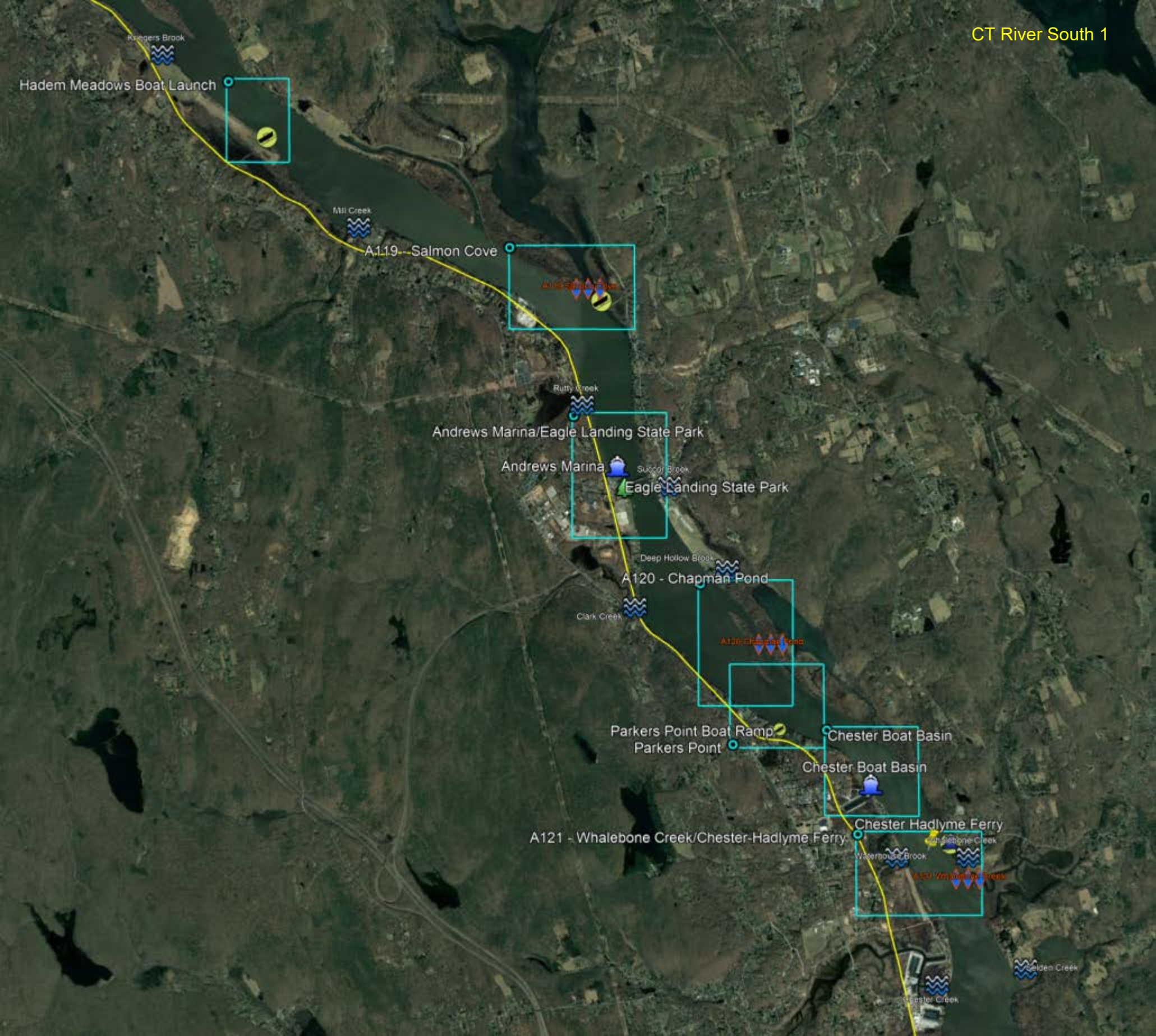
Waterhouse Brook

Whalebone Creek

A121 Whalebone Creek

Selden Creek

Chester Creek



Deep River Town Landing

Deep River Town Landing

Simon Brook

A122 - Selden Creek

Selden Creek

A123 - Joshua Creek

Joshua Creek

A124 - Hamburg Cove

A124 Hamburg Cove

Eightmile River

A125 - Nott Island

A110 - South & Middle Coves

A110 South & Middle Coves

A125 Nott Island

A125 Lord Cove

A126 - Lord Cove

A127 - Goose Island

A127 Goose Island

A128 - Calves Island

A128 Calves Island

A109 - Hyde Point Creek

A109 Hyde Point Creek

Baldwin Bridge State Boat Launch

