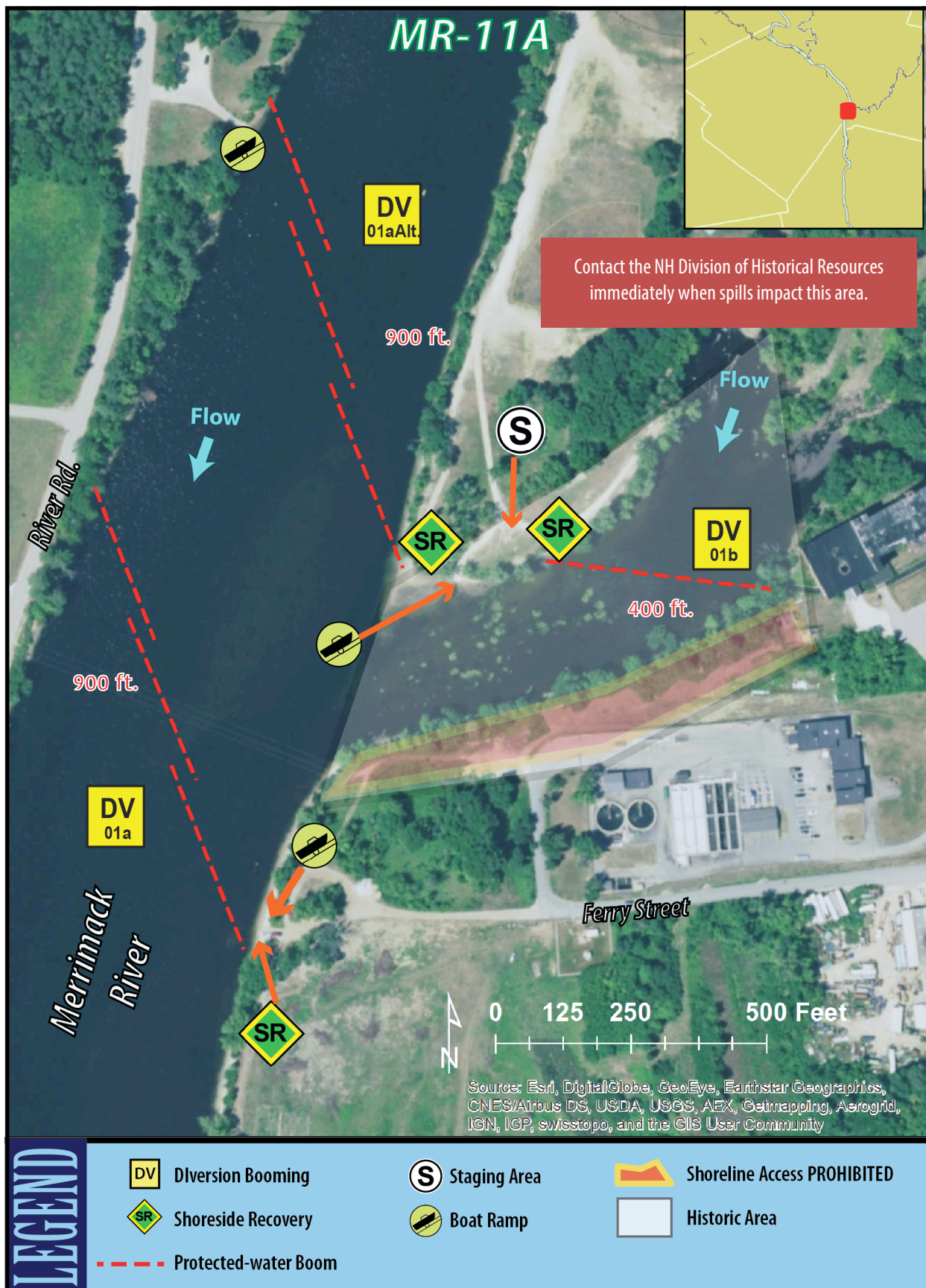


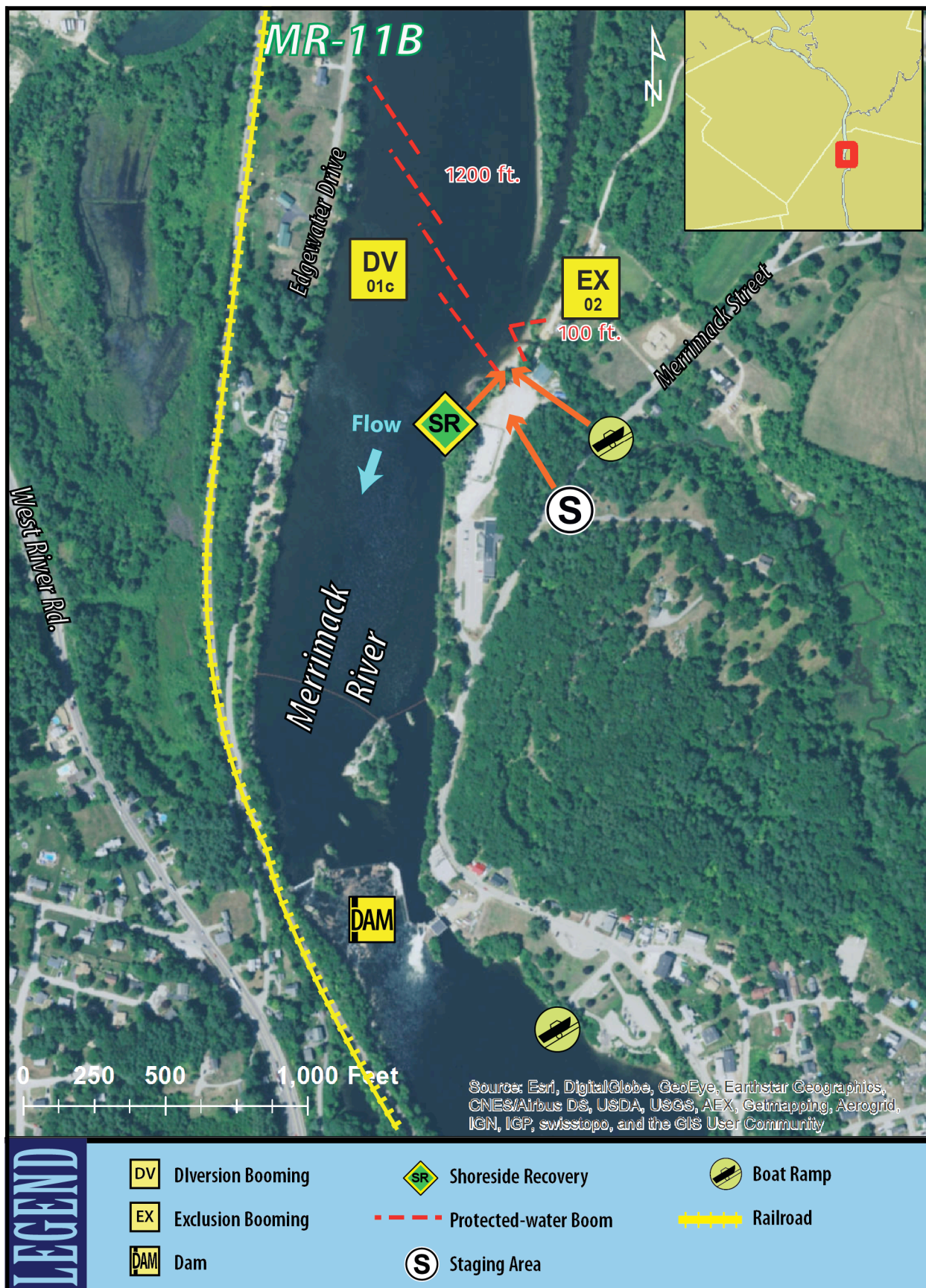


Merrimack River Geographic Response Plan

Suncook/Hooksett MR-11



Contact the NH Division of Historical Resources immediately when spills impact this area.







Merrimack River Geographic Response Plan

Suncook/Hooksett MR-11



ID	Location and Description	Response Strategy	Implementation
MR-11-01 	Suncook/Hooksett a.) Ferry St. Boat Ramp– Lat. 43° 7'38.58"N Lon. 71°27'54.48"W alt) Memorial Field Lat. 43° 7'46.21"N Lon. 71°27'50.97"W b.) Suncook River – Lat. 43° 7'41.14"N Lon. 71°27'43.13"W c.) Amoskeag Rowing Club – Lat. 43° 6'28.47"N Lon. 71°27'53.88"W	Divert and Collect – Shoreside Divert incoming oil to shoreside recovery locations to protect downstream areas along the Merrimack River.	Deploy anchors and boom with skiffs. For (a) Deploy 900 ft. of 12" – 18" boom in a single leg or cascade array (3-300 ft sections) at the proper angle to divert incoming oil to the collection site. alt) Deploy 900 ft. of 12" – 18" boom in a single leg or cascade array (3-300 ft sections) at the proper angle to divert incoming oil to the collection site. For (b) Deploy 400 ft. of 12" – 18" boom in a single leg or cascade array (2-200 ft sections) at the proper angle to divert incoming oil to the collection site. For (c) Deploy 1200 ft. of 12" – 18" boom in a single leg or cascade array (4-300 ft sections) at the proper angle to divert incoming oil to the collection site.
MR-11-02 	Browns Brook Lat. 43° 6'24.13"N Lon. 71°27'49.98"W	Exclusion Set boom across entrances to creeks, inlets, coves and near water treatment facilities to prevent oil from migrating into sensitive areas and critical infrastructure. Adjust the angle and length of boom depending on oil trajectory, river flow rate, and wind.	Deploy 100 ft of 12" – 18" boom as depicted to prevent oil from migrating into Browns Brook. Secure with anchor stakes on shore and anchors in midstream. Deploy passive recovery using sorbents at attachment points to minimize leakage.





Merrimack River Geographic Response Plan

Suncook/Hooksett MR-11



Response Resources	Staging Area Site Access	Resources Protected	Special Considerations	ID
Deployment Equipment 3400 ft. 12"-18" boom 15 anchor sets* 12 anchor stakes** 4 shoreside recovery systems Vessels 2 work boats or skiffs Personnel/Shift 2 vessel crew (per vessel)/2 shoreside responders Tending Vessels 1 work boat or skiff Personnel/Shift 2 vessel crew (per vessel)/2 shoreside responders *Anchor at end of each boom section and every 200 ft. ** Use two anchor stakes at end of each boom section	Staging Area: Memorial Field, Pleasant and Exchange Streets, Suncook, NH Note: In muddy conditions response vehicles must remain on dirt roads in vicinity of Memorial Field boat ramp to minimize soil disturbance and Amoskeag Rowing Club, 101 Merrimack St, Hooksett, NH Site Access: Memorial Field boat ramp, Bow boat ramp, Ferry St. boat ramp, Amoskeag Rowing Club boat ramp	Cultural Resources- Historical/Archaeologic al Sites Human use-Boat Ramp, Critical Infrastructure, Lock & Dam Land Management – Conservation Area, Highest Ranking Habitat (State & Region), Park Shoreline Habitat - Wetlands	River conditions including flow rate and flood stage vary depending on time of year and heavy rain and/or snowfall. Survey site prior to deployment and modify deployment tactics and techniques as appropriate based on observed river conditions. If ice is present GRP tactics and strategies must be reevaluated. Vessel operators should have local knowledge and experience operating in riverine environments. CAUTION: No digging along Suncook River at site of DV-01b. A natural gas pipeline passes under the Suncook River in this area. Entire site surveyed: 05/24/17 Field tested: No	MR-11-01 DV
Deployment Equipment 100 ft. 12"-18" boom 1 anchor set* 4 anchor stakes** Vessels 1 work boat or skiff Personnel/Shift 2 vessel crew (per vessel)/2 shoreside responders Tending Vessels 1 work boat or skiff Personnel/Shift 2 vessel crew (per vessel)/2 shoreside responders	Same as MR-11-01		Same as MR-11-01	MR-11-02 EX





Merrimack River Geographic Response Plan Suncook/Hooksett MR-11



Site Photographs and Contact Information



Suncook River looking south at site of DV-01b. River flows from left to right. Merrimack River to right.



Memorial Park boat ramp at DV-01b



Site of DV-01a looking upriver



Site of DV-01c at Amoskeag Rowing Club. View looks upriver



Amoskeag Rowing Club boat ramp

CONTACT INFORMATION:

Bedford FD: 603-472-3219

Hooksett FD: 603-623-7272

Hudson FD: 603-886-6021

Litchfield FD: 603-424-8071

Manchester FD: (603) 669-2256

Merrimack FD: 603 424-3690

Nashua FD: 603-594-3651

Nashua Emergency Management: 603-589-3275

Dam Control - Eversource (24-hr): 800-592-2000

Manchester Water Works (24-hr): 603-203-0772

NH DES (Oil Spill): 603-271-3899 (day)

NH DES (After Hours/Weekends) via NH State

Police: 603-223-4381

NH DES Drinking Water and Groundwater Bureau –

603-271-2513 (day)

NH Fish & Game: 603-271-3361

NH Div. of Historical Resources: 603-271-3483

NH Dept. of Safety/Homeland Security and Emergency

Management: 800-852-3792

National Response Center: 800-424-8802

Pan Am Railways (24-hr): 207-873-6921

Pennichuck Water Works (24-hr):

603-566-0650



Merrimack River GRPs have been incorporated into EPA Region One's Inland Area Contingency Plan (ACP) and is available at the following website:

https://nrtqa.ert.org/site/doc_list.aspx?site_id=38 or accessed via QR reader-enabled smartphones by scanning the QR code above.

